

KEY FEATURES

- Easily manage assets across your entire operation, from heavy machines to portable generators
- Track your operational activities and productivity via easy-to-read maps, charts, status reports and dashboard views
- Monitor equipment movement and track events like vehicle starting, stopping and speeding or movement outside of a pre-defined area
- Monitor sensors triggered such as low oil pressure or a dump bed being raised or lowered
- Set up e-mail and SMS alerts to enable you to quickly respond to asset activity
- Seamlessly transfer data between field equipment and the main office using cellular communication one- or two-way data link
- Efficiently dispatch and optimize the coordination of equipment, including rentals, during heavy construction periods

KEY BENEFITS

- Helps you centralize and simplify the management of on-site operations
- Improves individual asset productivity
- Reduces maintenance and fuel costs by tracking machine hours, mileage and idle and working time for more timely servicing
- Provides extensive data for accurate billing, project costing and estimating future projects
- Improves both operator and site safety
- Reduces overtime and increases employee productivity
- Allows integration of ERP systems such as payroll, accounting and in-house maintenance packages
- Provides peace of mind in knowing what is happening on your construction site at all times

THE CONSTRUCTION INDUSTRY TODAY IS CHALLENGED WITH COORDINATING LARGE AMOUNTS OF EQUIPMENT ON MULTIPLE JOBS AND ACROSS WIDE GEOGRAPHICAL REGIONS. PERHAPS THE BIGGEST CHALLENGE OF ALL IS GETTING BUSINESS DONE EFFICIENTLY AND EFFECTIVELY.

Trimble Construction Manager is a powerful integration of software, hardware, GPS technology, wireless data communication and Internet connectivity that provides construction companies, contractors and construction rental companies of any size with innovative tools to increase their profitability through highly efficient asset management and utilization. This easy-to-use, integrated solution focuses on your specific needs for managing mobile, machine and portable assets and ensures that you utilize the right hardware device for each asset.

Built specifically for the construction industry, Trimble Construction Manager provides a powerful, yet easy-to-use solution for companies to manage equipment such as dump trucks, fuel trucks, graders, loaders and generators. It brings together a variety of different kinds of information, including location, hours and user-defined events and alerts, to provide an overview of operations, as well as detailed data for in-depth analysis.

Users access information about their equipment by utilizing a map view, running on-demand reports or charts, and using an automatically updating dashboard view. With the alerts feature, users can be automatically notified of unexpected activity via e-mail or SMS text messaging, which can aid in speedy theft recovery. Scheduled reports, e-mailed at

regular intervals, ensure the right information gets to the right people at the right time.

SAVING TIME AND MONEY

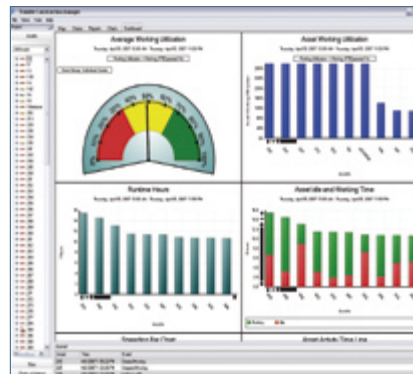
Designed to reduce construction project costs through enhanced equipment utilization, improved safety and theft recovery, Trimble Construction Manager provides owners, managers and supervisors with a greatly improved understanding of a construction company's operations.

Trimble Construction Manager saves you time and money by optimizing your overall asset utilization. It does so by efficiently coordinating vehicles, light and heavy machines and portable assets across multiple work sites throughout your operation. The Trimble Construction Manager solution is a client/server hosted application that allows you to monitor your operations from anywhere in the world simply by logging into your secure account from any Internet-connected computer.

HOW IT WORKS

Trimble Construction Manager uses GPS-based positioning hardware and widely available GSM/GPRS wireless networks to provide information to a secure data server. The Internet-based Trimble Construction Manager software displays information about the equipment in real-time and facilitates the optimization of equipment deployment from one graphical interface. The software provides customized reporting capabilities to address each company's unique business needs and delivers these reports in Microsoft® Excel®.

Using Trimble Construction Manager, contractors can realize lower operating costs, reduced fuel consumption, improved equipment productivity and utilization, resulting in a rapid return on investment.



TRIMBLE CONSTRUCTION MANAGER SOFTWARE

Software

Trimble Construction Manager Software provides an intuitive interface that connects assets in the field to decision-makers in the office, making it easy to evaluate construction operations and take action in real time. A variety of easy-to-understand charts, reports and dashboards provide valuable information regarding the activity of your assets (up to 90 days ago), enabling you to improve asset productivity, and ultimately, your profitability.

Wireless Data Communication

Information is transmitted between assets and the Trimble Construction Manager software over cellular networks. You can select from a variety

of providers and service plans to access tailored levels of data for each asset precisely when you need it. For example, you can get information once or twice a day for a portable asset, or every minute for a mobile asset.

GPS Hardware Device

Your assets are equipped with a hardware device containing the latest in GPS technology. That hardware provides immediate location information—even in difficult environments typically found on a construction site. Several hardware options are available to ensure that you have the right solution for each asset.

HERE ARE SOME EXAMPLES OF WHAT TRIMBLE CONSTRUCTION MANAGER SOFTWARE CAN DO FOR YOU:

KNOW WHEN ASSETS ENTER/EXIT SITES

- Define areas of interest, known as Sites, by drawing site boundaries in the Map View. The boundary of each site represents an invisible fence. The system detects when an asset enters or exits a site and helps you better understand your true cycle times and asset activity for accurate project billing.
- Retrieve site information using Trimble Construction Manager's extensive reporting capabilities.
- Set up e-mail and SMS messaging alerts so that you are notified when an asset enters or exits a site.



VIEW ASSET HISTORY

- Use the Asset History feature for verification of an asset's location for any time during the past 90 days.
- Screen icons show different event types for enhanced usability.
- Tool Tips shows the date, time, event type and current speed at a particular time.

SET UP ALERTS FOR NOTIFICATION OF ASSET ACTIVITY

- Use alerts to e-mail/SMS message appropriate personnel whenever certain criteria are met.
- Use alerts to be notified when unexpected asset movement occurs (like after hours), for notification when an asset exceeds a specified speed for employee safety or when an asset enters a potentially hazardous zone.
- Alerts can be sent to any e-mail-enabled device, including Blackberry and Microsoft Windows Mobile-enabled handheld devices.



© 2008, Trimble Navigation Limited. All rights reserved. Trimble and the Globe & Triangle logo are trademarks of Trimble Navigation Limited, registered in the United States and in other countries. Microsoft Mobile is a registered trademark of Microsoft Corporation in the United States and/or other countries. All other trademarks are the property of their respective owners. PN 022508-101A (07/08)

Specifications subject to change without notice.

TRIMBLE AUTHORIZED DISTRIBUTION PARTNER

NORTH AMERICA

Trimble Construction Division
5475 Kellenburger Road
Dayton, Ohio 45424
USA
800-538-7800 (Toll Free)
+1-937-245-5154 Phone
+1-937-233-9441 Fax

EUROPE

Trimble GmbH
Am Prime Parc 11
65479 Raunheim
GERMANY
+49-6142-2100-0 Phone
+49-6142-2100-550 Fax

ASIA-PACIFIC

Trimble Navigation
Singapore PTE Ltd.
80 Marine Parade Road, #22-06
Parkway Parade
Singapore, 449269
SINGAPORE
+65 6348 2212 Phone
+65 6348 2232 Fax



www.trimble.com